



1b

briccole
of Venice



G E A W O O D[®]

PAVIMENTI IN LEGNO

MADE IN ITALY



Geewood: An environmental as well as an artistic mission.

The waters of Venice's lagoon hide a completely unknown patrimony which our company has recovered and revalued, contributing at the same time to the safekeeping of the lagoon environment. Geewood is concerned

with the transformation of the worn out "bricole" the hidden treasure of the lagoon whose beauty is resplendent in our production of crafted objects which narrate the centuries of a city and territory of timeless fascination.





A lifelong story

Venice and the lagoon it overlooks, dotted with islands and tiny settlements, are some of the most fascinating places in our country. Their dreamlike beauty and intrinsic historical value have inspired the works of writers, painters, every kind of artist over the centuries, making Venice much more than a city, they have projected it beyond time and space, transforming it into a myth. The ancient history of these places has its beginning in prehistory when man first settled in this territory rich in living resources, first among these fishing. Man therefore developed a symbiotic relationship with the water, characteristic element of this

area on which to lay their vessels and homes. Pile-dwellings were the basic element of this relationship with the lagoon territory, which permitted all the subsequent development of life and civilisation. Today, more than 1000 years later, the beds of the lagoon look like an immense “forest” formed of long oak and larch posts, which sink into the muddy lagoon bed until they reach a more solid layer, called “caranto”. Consequently a particular underwater environment, the importance of which is perfectly exemplified by the famous worn out “bricole”, groups of three posts which in the lagoon indicate the navigable areas and provide important

information to seamen. Our company deals with salvaging and enhancing the value of the worn out bricole, the wood which they are made of, attacked by a mollusc who feeds on it and soaked through by the brackish water, acquire amazing properties over the years, which place them among the objects considered desirable by the most important designers in the world. However, their value goes well beyond their physical composition, we recover a piece of history from the Venetian lagoon and by means of a meticulous process of craftsmanship, we create pieces of furniture which conserve all the beauty and magic of this extraordinary land.





Briccole

The city of Venice is part of a vast lagoon system, made up of islands and canals. The regulation of navigation in this difficult stretch of sea has always been an important aspect of this territory. As it is vital for a big, mainland city to have an adequate road system and a high standard of security, likewise, for a city such as Venice, a system of navigable canals is of primary importance. The pillars on which the organization of naval traffic in the lagoon rests are the briccole (in international maritime nomenclature called “duc d’albe” or

“Dalben” or “dolfin”), a set of three stakes driven into the ground and emerging from the water for part of their length, which are used to delimit the waterways. These numbered poles provide seamen with a wealth of information about the depth of the seabed, the changing of the tides, etc..

The lagoon is literally dotted with these briccole, but their exact number is not known, although reliable estimates speak of an amount between 60000 and 90000 units. As with the pillars of the buildings in



Venice, the poles that make up the bricole are predominantly made from European oak, have an average length of from 10 to 15 metres and a diameter between 35 and 50 centimeters.

Once unusable they must be replaced, to avoid that, cracking, they may become a danger for navigation. For years the bricole have been made from wood from France and Germany, countries with FSC and PEFC certified forests, whose wood mass is constantly expanding.

The shipworm



The bricole have a much greater enemy than time: the shipworm (Teredos Nautilus), also known as the marine worm, a mollusc which lives in brackish water and feeds on wood. Since ancient times they have been the terror of all seamen, as they are capable of quickly destroying a port structure and boat hulls. However, it is precisely the attacks of these shipworms that make the worn out bricole a raw material appreciated by the best designers in the world, perfect for the creation of exclusive wooden flooring.







A guaranteed origin.

The substitution of the worn out bricole is regulated by the Magistrate of the Water, a peripheral institution of the Ministry of Infrastructure and Transport, which since 1907 deals with the management and protection of the lagoon of Venice. Through a tender, the work of removal of the spent poles and the laying of new ones is assigned to

specialized companies .

After withdrawal we submit the poles to a meticulous process.







Reveal the hidden beauty: the working in progress

Only a proportion of between 10 and 20% of the surface of a spent pole shows the attack of the shipworm and it is their presence which makes this formidable raw material unique. Our method of processing allows complete re-use of the worn out briccole, realizing elements for parquet flooring, panelling, furniture etc.. Our contribution is, therefore,

environmental as well as artistic: our commitment to protecting the environment through the re-use of a material for disposal, is accompanied by the desire to create objects with unique design, embellished with beautiful patterns carved into the wood by the molluscs which feed on it. However, it is not only the action of the shipworm which makes this

material extraordinary; its immersion in brackish water removes the sugary parts and the hemicellulose of the wood, leaving only lignin and salt, which give life to a subject of extraordinary dimensional stability. It is a unique product in the world and all our work is dedicated to enhancing its beauty and quality.



For this reason we carefully follow every stage of production. First we prepare the briccola for the subsequent phases with attentive removal of extraneous elements and by careful washing. We then proceed to the cutting of the poles so as to obtain axes of various lengths and thicknesses, suitable for the realization of different products. Having made the cut we can start the drying procedure, moment of prime importance in the entire

production process: the method we use allows us to highlight the qualities that immersion in brackish water gives the wood, ensuring the re-use of the entire worn out briccola and not only part of it. After drying, our wood can be worked to take on the desired shape: this extraordinary material poses no limits to creativity, instead exalts it, thanks to its stability and its refinement of engraved signs due to the slow hollowing of the shipworm.





*“The warmth of the wood,
its relaxing tones
together with the uniqueness
of a material
slowly transformed
by the action of time.”*

BRICCOLA PARQUET

For many years our company has been involved in creating wooden floors. The briccole have enriched our collection with a product which is unique in its quality and charm. The warmth of the wood, its shades of relaxing colours, together with the uniqueness of a material which has been slowly transformed by the action of time, make our parquet the ideal solution for comfortable, refined interiors. Besides the environmental aspect we must not forget the ecological one - the salvaging and transformation of the briccole in flooring which allows the reuse of a material otherwise destined for the rubbish heap where its beauty would be lost forever.









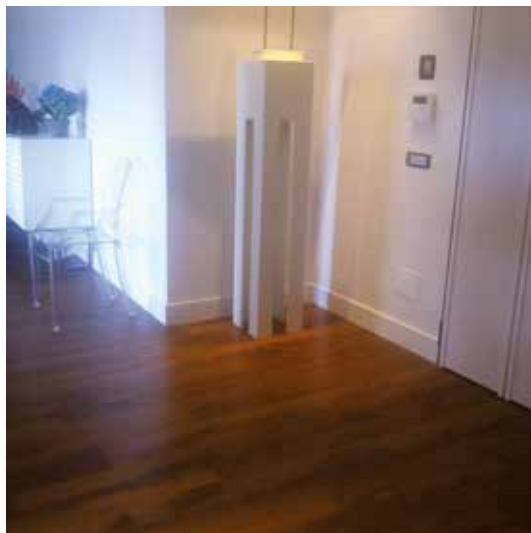
The bricole are an indispensable part of the history of the city of Venice. Over the centuries the naval traffic in the Lagoon has been regulated and is still today non-negotiable. This fundamental historic role is transmitted to our flooring, a solid basis on which to build personal interiors.

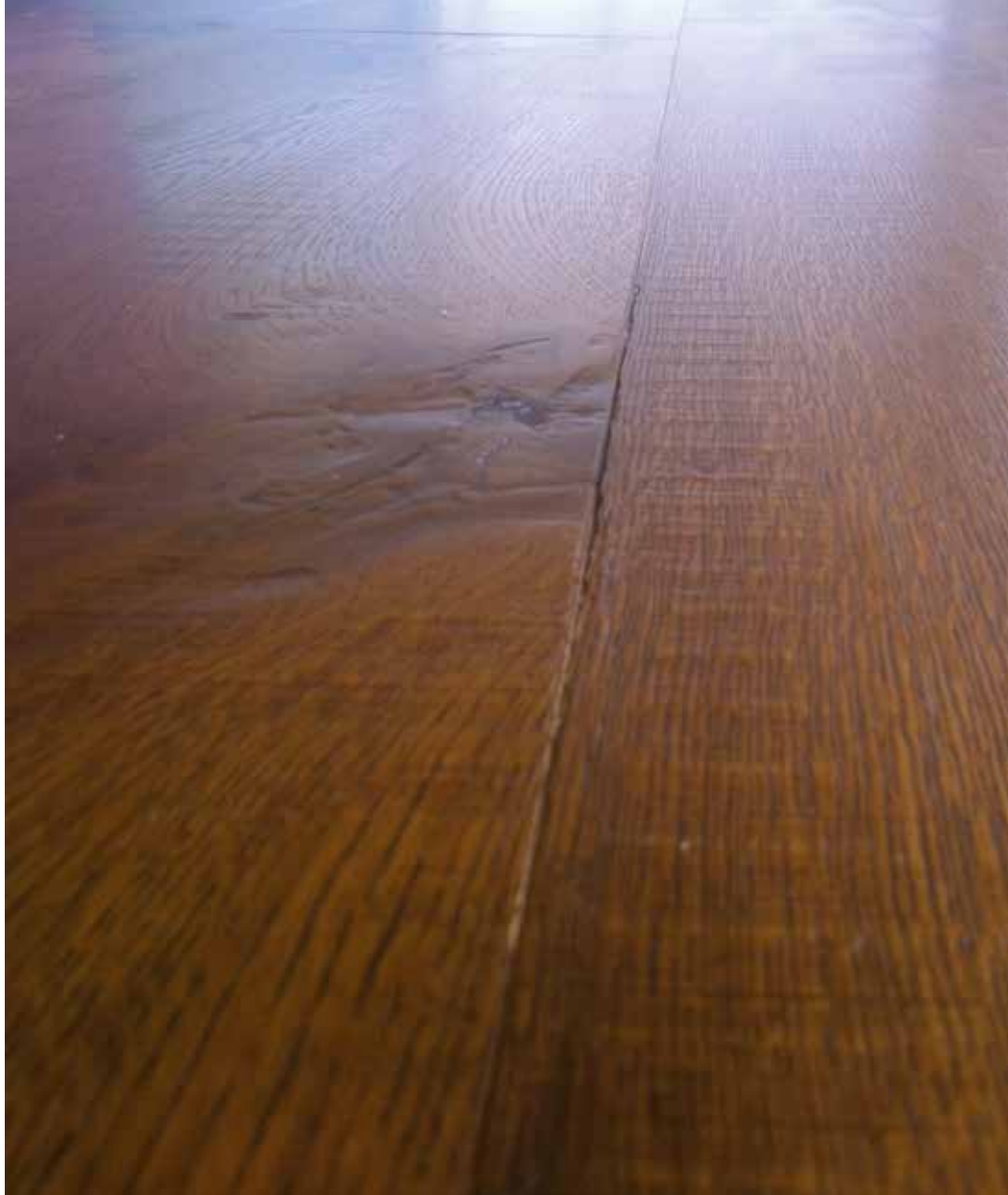


The parquet is available in two different shades to satisfy our clients' furnishing tastes to the best.



Interiors furnished with certified Venetian Briccole.









GEAWOOD®

PAVIMENTI IN LEGNO

MADE IN ITALY



Our products with certified Venetian Briccole.

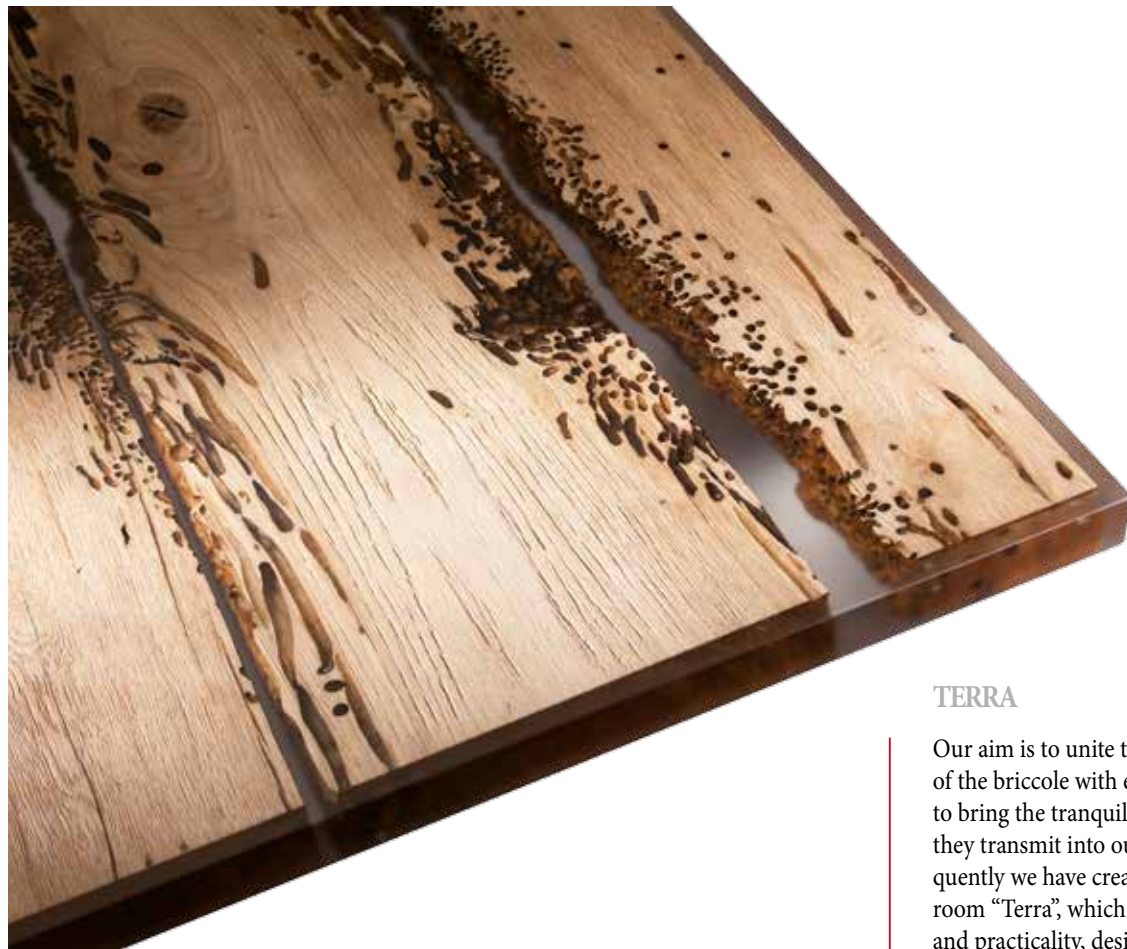


ACQUA

What makes the briccole a unique and fascinating material is the water from the lagoon. With this table called 'Acqua' we wish to celebrate the marriage between wood and water, a union which tells the secular history of the city of Venice.

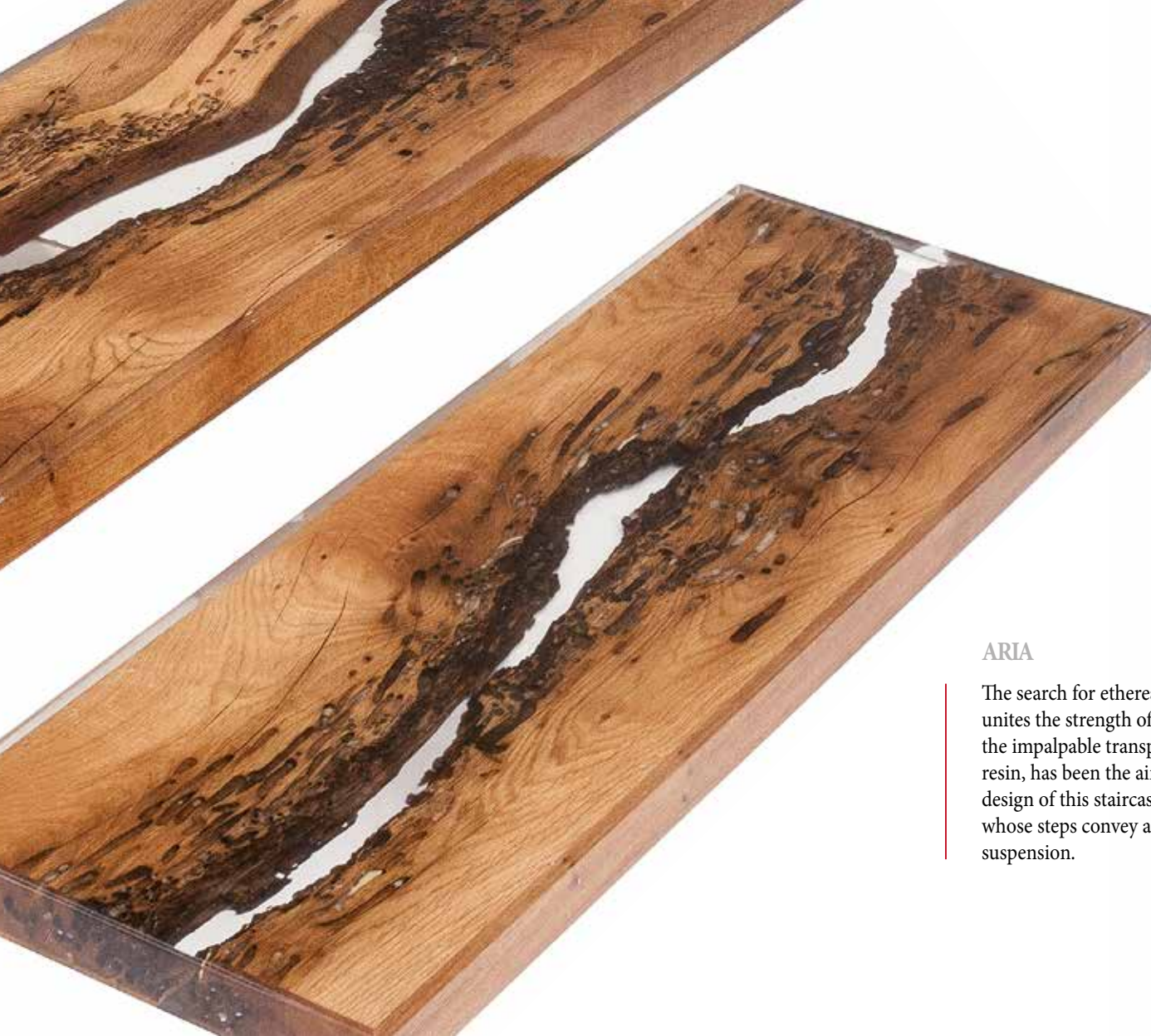






TERRA

Our aim is to unite the natural beauty of the briccole with everyday objects to bring the tranquillity and harmony they transmit into our homes: consequently we have created our top bathroom “Terra”, which combines elegance and practicality, design and freshness.



ARIA

The search for ethereal solidity, which unites the strength of the wood and the impalpable transparency of the resin, has been the aim behind the design of this staircase called “Aria”, whose steps convey a pleasant sense of suspension.





GEA WOOD ITALIA SRL - Unipersonale

Uffici e Show Room:

Via G. Salvemini, 2 - 04100 Latina (LT)

Sede legale:

Via dei Limoni, 29/B - 00172 Roma (RM)

tel. +39 0773 47 41 66 - tel. +39 0773 41 70 30

fax +39 0773 41 17 79

www.geawood.com - info@geawood.com

100% MADE IN ITALY

